

Office Cooperative For Sale or Lease

49 WEST 24TH STREET

between Fifth and Sixth Avenues, New York, NY

Unit: Entire 2nd Floor

Size: 4,850 Rentable Square Feet (RSF)

Price: \$4,275,000

Annual Maintenance (inclusive of real estate taxes): \$10.23/RSF

Lease Rate: \$53.00/RSF

Unit Highlights:

- Full floor presence featuring loft-like ceilings
- Highly efficient layout with oversized windows
- Low maintenance charges
- Immediate possession

Building Highlights:

- Located in the heart of the thriving Chelsea submarket and less than one block from Madison Square Park
- Close proximity to seven subway lines and the PATH train
- Separate freight entrance and elevator



For more information please visit
www.rudderpg.com/49w24th or contact:

Michael Rudder

Office: (212) 966-3611
Mobile: (646) 483-2203
mrudder@rudderpg.com

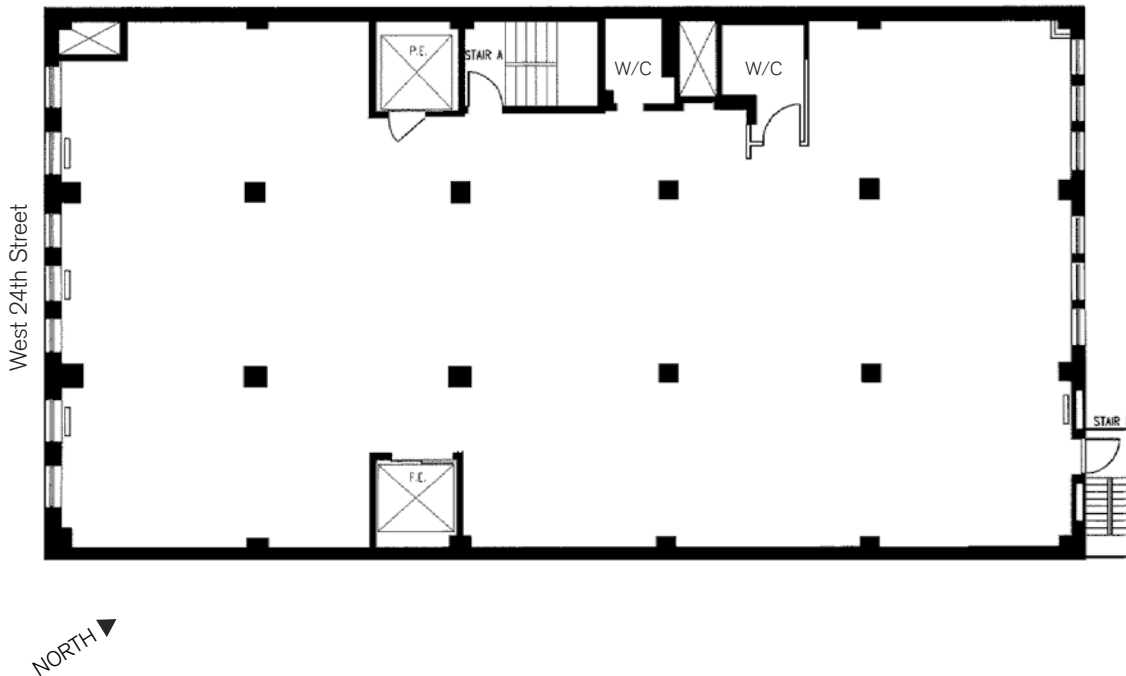
Michael Heller

Office: (212) 966-3622
Mobile: (917) 439-2198
mheller@rudderpg.com

Office Cooperative For Sale or Lease

49 WEST 24TH STREET

between Fifth and Sixth Avenues, New York, NY



All information supplied is from sources deemed reliable and is furnished subject to errors, omissions, modifications, removal of the listing from sale, and to any listing conditions, including the prices. Any square footage dimensions set forth are estimates based on approximate rentable measurements. Usable square footage measurements are set forth in the Offering Plan.



For more information please visit
www.rudderpg.com/49w24th or contact:

Michael Rudder
 Office: (212) 966-3611
 Mobile: (646) 483-2203
 mrudder@rudderpg.com

Michael Heller
 Office: (212) 966-3622
 Mobile: (917) 439-2198
 mheller@rudderpg.com